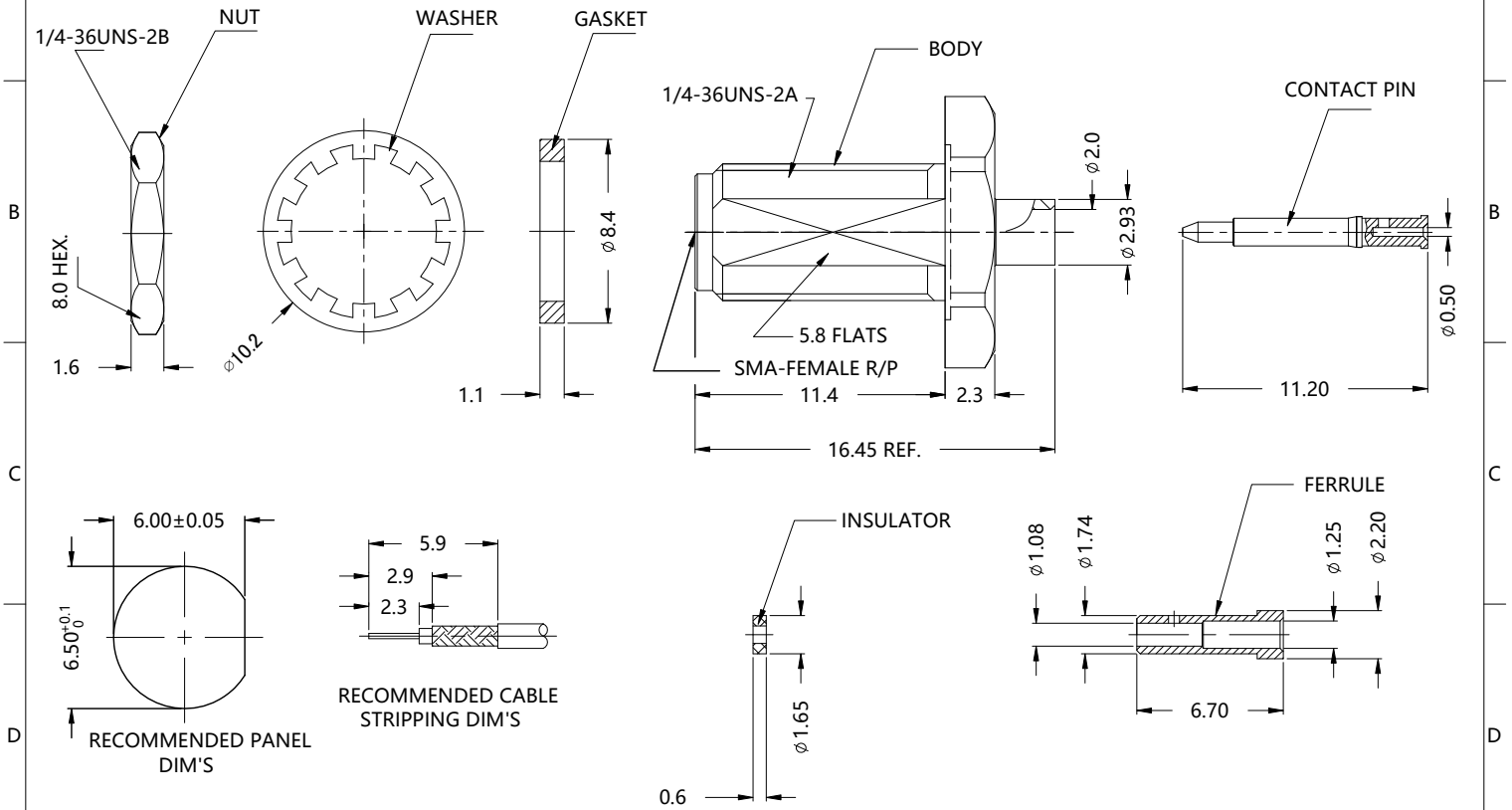


REV.	DESCRIPTION	ECN NO.	NAME	DATE			
0	NEW FRAME	N/A	YJY	2021-08-13			



ALL PARTS MUST MEET TO RoHS REQUIREMENTS

1.FERRULE TO CRIMPED THE HEX. SIZE .100"
2.CONTACT PIN TO SOLDER



MATERIALS AND PLATING		UNIT: MICRO-INCHES
PART NAME	MATERIALS	PLATING
BODY	BRASS C3604	GOLD /NICKEL/COPPER
INSULATOR	PTFE ASTM-D-1710	N/A
CONTACT PIN	BRASS	GOLD 5 u"/NICKEL/COPPER
NUT/WASHER	BRASS	GOLD /NICKEL/COPPER

ELECTRICAL CHARACTERISTICS	
IMPEDANCE	50 Ω
VOLTAGE RATING	175 V(rms)
FREQUENCY RANGE	0 ~ 6 GHz
DIELECTRIC WITHSTANDING VOLTAGE	> 500 V
CONTACT RESISTANCE	CENTER CONTACT < 3.0 m Ω
	OUTER CONTACT < 2.0 m Ω
INSULATION RESISTANCE	> 1000 M Ω
INSERTION LOSS	N/A
RF-LEAKAGE	N/A
VSWR	< 1.30
3RD INTERMODULATION	N/A

MECHANICAL CHARACTERISTICS	
FORCE TO ENGAGE AND DISENGAGE	N/A
CENTER CONTACT RETENTION FORCE	> 6 lbs
RECOMMENDED COUPLING TORQUE	N/A
COUPLING NUT RETENTION FORCE	N/A
DURABILITY	> 500 cycles

ENVIRONMENTAL PARAMETER	
TEMPERATURE RANGE	-40 °C ~ +125 °C

* CUSTOMER OUTLINE DRAWING

UNLESS OTHERWISE SPECIFIED:
 1) EDGES : C0.15 MAX ;
 2) REMOVE ALL BURRS ;
 3) SURFACE ROUGHNESS : Ra1.6 ;
 4) UNITS : mm ;
 5) DIMENSIONS TOLERANCES
 DECIMALS : .x ±0.5 .xx ±0.3 .xxx±0.2;
 ANGLES : ± 5°.

THIRD ANGLE PROJECTION	
APPROVED :	CUSTOMER P/N :
CHECKED :	SCALE :
DRAWING :	DATE :
PAGE : 1/1	

SLK
 SUPERLINK
 TITLE : SMA BH FEMALE S/T CRIMP FOR $\phi 1.13$ CABLE , 50 Ω
 DRAWING NO. : 5RMAF15S-A60-004
 COMPANY WEBSITE : www.slkcorp.com

CUSTOMER OUTLINE DRAWING