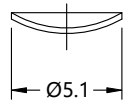
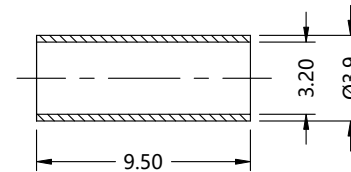
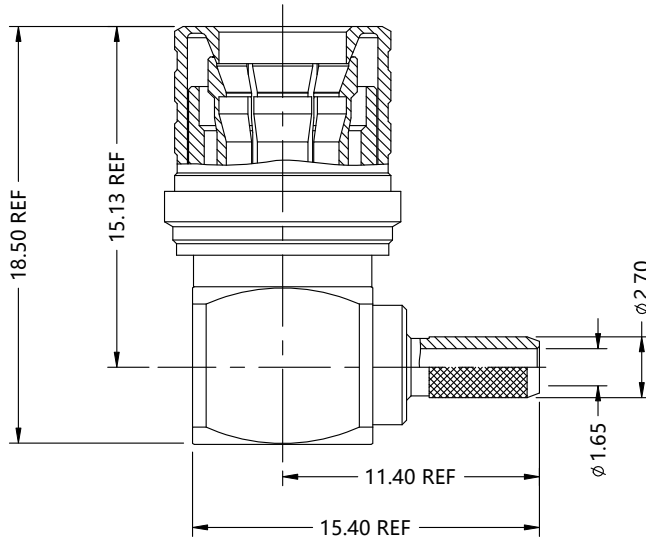
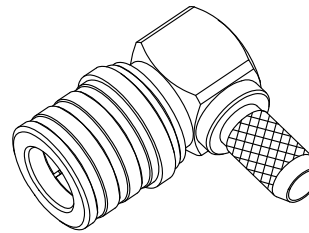


REV.	DESCRIPTION	ECN NO.	NAME	DATE
0	FIRST EDITION	N/A	Kevin.Li	2021-06-21



ALL PARTS MUST MEET TO RoHS REQUIREMENTS

1. FERRULE TO CRIMPED THE HEX. SIZE .130"



MATERIALS AND PLATING		UNIT: MICRO-INCHES
PART NAME	MATERIALS	PLATING
BODY	BRASS	NICKEL 100u"/COPPER
INSULATOR	PTFE	N/A
CONTACT PIN	BRASS C3604	GOLD PL.16 u"/COPPER
OUT CONTACT	PHOSPHOR BZONZE	GOLD PL.5 u"/COPPER

ELECTRICAL CHARACTERISTICS	
IMPEDANCE	50 Ω
VOLTAGE RATING	250 V(rms)
FREQUENCY RANGE	0~3 GHz
DIELECTRIC WITHSTANDING VOLTAGE	>750 V
CONTACT RESISTANCE	CENTER CONTACT
	OUTER CONTACT
INSULATION RESISTANCE	>5000 M Ω
INSERTION LOSS	≤ 0.2 dB
VSWR	< 1.15
3RD INTERMODULATION	N/A

MECHANICAL CHARACTERISTICS	
FORCE TO ENGAGE AND DISENGAGE	N/A
CENTER CONTACT RETENTION FORCE	≥ 6 LBS
RECOMMENDED COUPLING TORQUE	N/A
COUPLING NUT RETENTION FORCE	N/A
DURABILITY	> 500cycles

ENVIRONMENTAL PARAMETER	
TEMPERATURE RANGE	-65 $^{\circ}$ C~+165 $^{\circ}$ C
WATERPROOF	IP65(AFTER MATING)

* CUSTOMER OUTLINE DRAWING

UNLESS OTHERWISE SPECIFIED:

- 1) EDGES : C0.15 MAX ;
- 2) REMOVE ALL BURRS ;
- 3) SURFACE ROUGHNESS : Ra1.6 ;
- 4) UNITS : mm ;
- 5) DIMENSIONS TOLERANCES
 DECIMALS : .x ± 0.2 .xx ± 0.1 .xxx ± 0.05 ;
 ANGLES : $\pm 5^{\circ}$.

THIRD ANGLE PROJECTION



APPROVED :

CUSTOMER P/N :

CHECKED :

SCALE :

DRAWING :

DATE : 2021-06-21

PAGE : 1/1



TITLE : QMA RIGHT ANGLE MALE CRIMP FOR RG316 CABLE ,50 Ω

DRAWING NO. :

5QAM11R-A02-003

COMPANY WEBSITE : www.slkcorp.com

CUSTOMER OUTLINE DRAWING